



FLOOD MITIGATION AND BANK STABILIZATION
MEASURES

FACILITY OVERVIEW

- UTILITY BACKGROUND

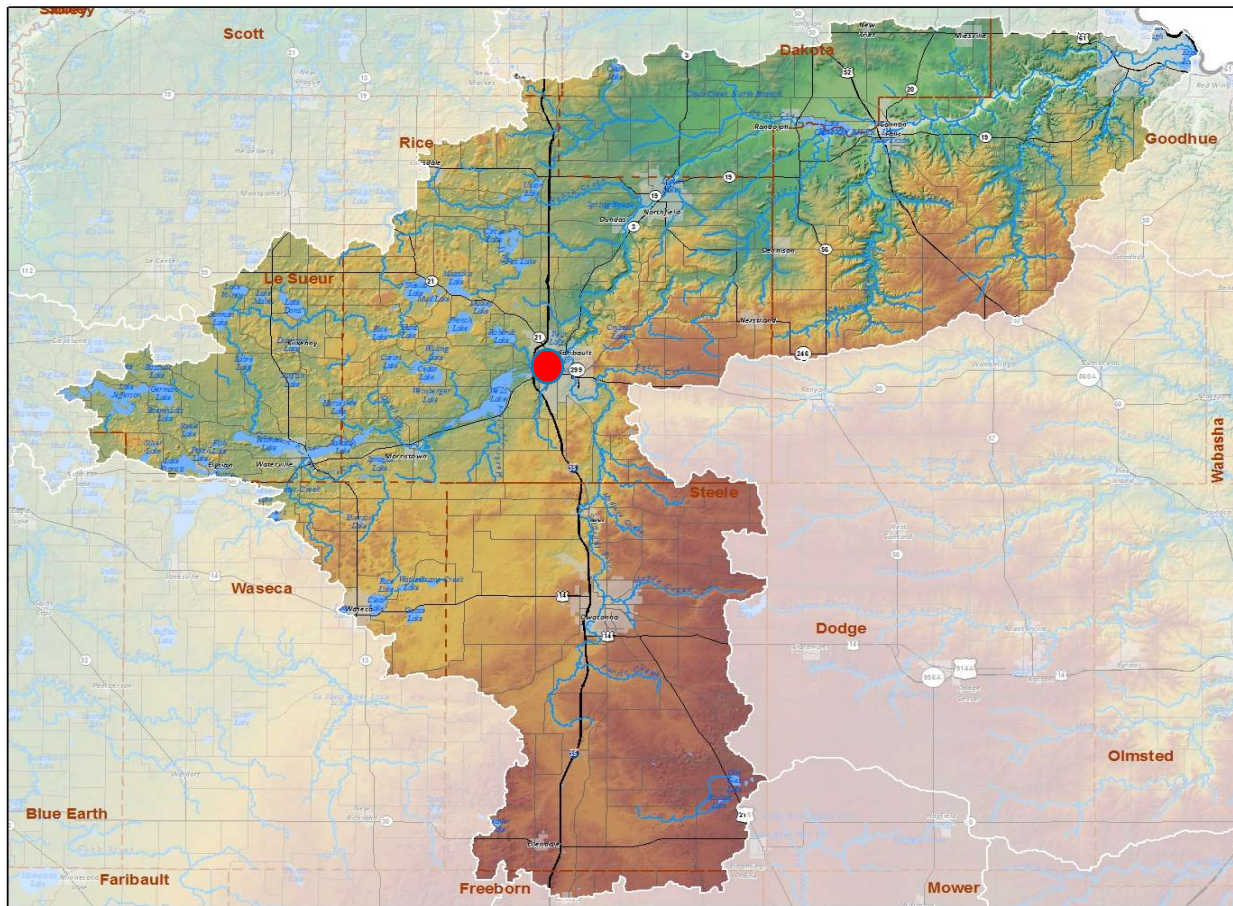
- AVERAGE FLOW: 4 MGD
- 50-60% FLOW IS INDUSTRIAL
- POPULATION SERVED: 23,352

- CONCERNED WITH FLOODING

- PREVIOUS PERIODS OF OVERFLOW/BYPASS
- INFILTRATION & INFLOW

- 2010 FLOOD IMPACTS

- FACILITY LOCATED ON THE RIVER AND EXPERIENCED 6.17 INCHES OF RAIN IN FOUR DAYS. 8.56 INCHES FELL IN THE SAME TIME PERIOD UPSTREAM.
- PLANT TAKEN OFF-LINE; SIPHON ON INTERCEPTORS ACROSS RIVER KNOCKED OFF-LINE FOR OVER ONE MONTH
- STRUCTURE RELOCATED AWAY FROM THE RIVER



LEGEND

- Major Roads and Highways
- County Boundaries
- State Boundaries
- Major Waterways
- Lakes and Reservoirs
- Municipal Boundaries

ELEVATION (feet)

High: 2,201

1,875

1,420

1,025

Low: 450

0 2 4 8 Mi

0 3 6 12 Km

WRC
WATER RESOURCES CENTER
MINNESOTA STATE UNIVERSITY, MARSHALL

CANNON RIVER MAJOR WATERSHED








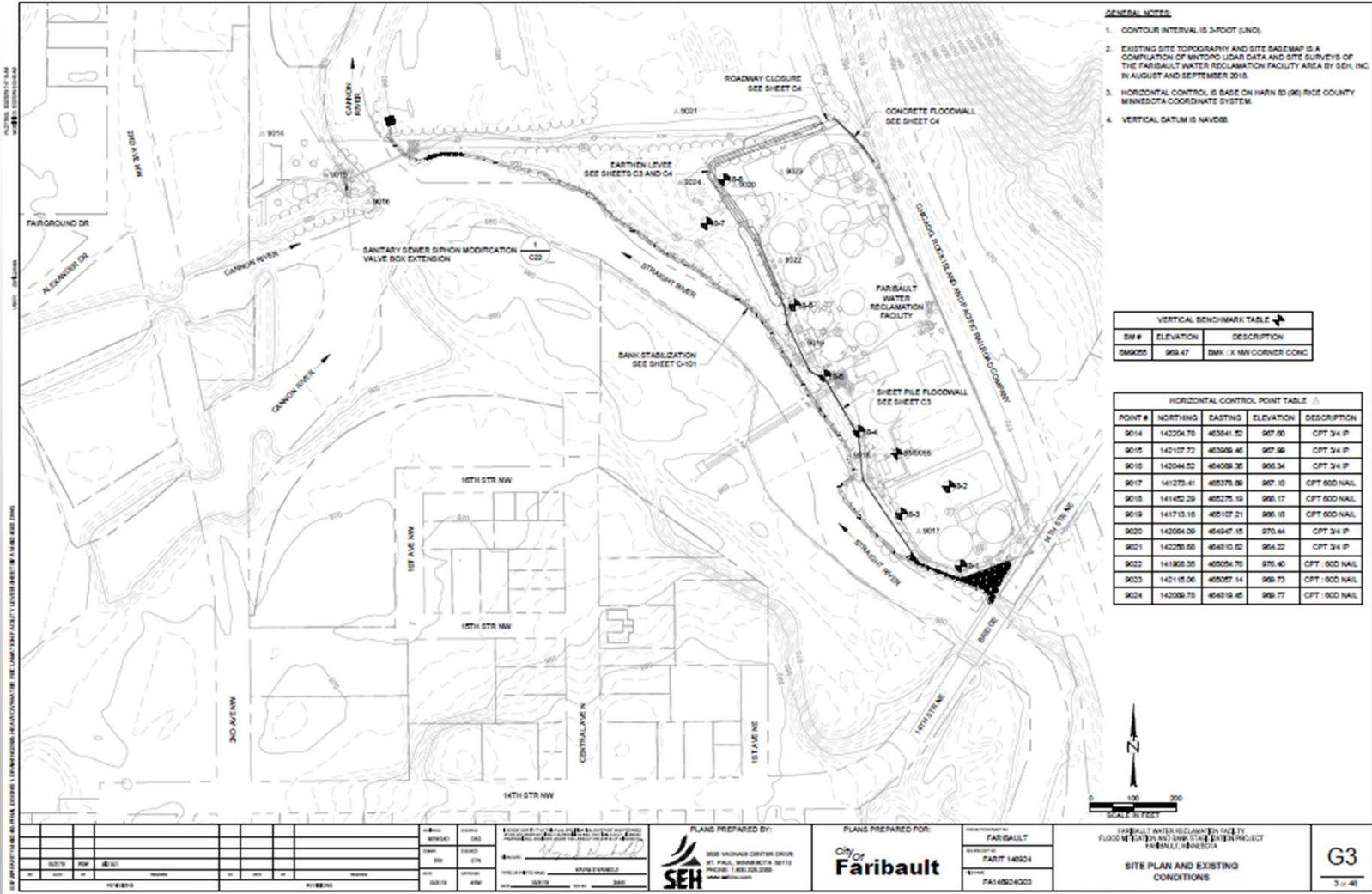






FLOOD MITIGATION MEASURES

- CONSTRUCTION OF APPROXIMATELY 1,715 FEET OF FLOOD BARRIER
 - 995 FEET OF FLOODWALL AND 720 FEET OF LEVEE ALONG THE WEST SIDE OF THE WRF.
 - THE CONSTRUCTION OF AN EASTERN FLOODWALL TIEBACK AND ROAD CLOSURE SYSTEM.
 - THE CONSTRUCTION OF 1,900 FEET OF STREAMBANK STABILIZATION ALONG THE EAST BANK OF THE STRAIGHT RIVER.
 - MAKE IMPROVEMENTS (ELEVATING TO ALLOW ACCESS UNDER FLOODING CONDITIONS) TO A KEY SANITARY SEWER STRUCTURE THAT COLLECTS WASTEWATER FROM THE NORTHERN AND INDUSTRIAL PARK SERVICE AREAS OF THE COMMUNITY.
- 



- GENERAL NOTES:**
1. CONTOUR INTERVAL IS 2-FOOT (2.00').
 2. EXISTING SITE TOPOGRAPHY AND SITE BASEMAP IS A COMPILATION OF MINTRO LIDAR DATA AND SITE SURVEYS OF THE FARIBAULT WATER RECLAMATION FACILITY AREA BY SEH, INC. IN AUGUST AND SEPTEMBER 2018.
 3. HORIZONTAL CONTROL IS BASED ON HARN 83 (86) RICE COUNTY MINNESOTA COORDINATE SYSTEM.
 4. VERTICAL DATUM IS NAVD83.

VERTICAL BENCHMARK TABLE

BM #	ELEVATION	DESCRIPTION
BM9005	969.47	BMK - X MY CORNER CONC

HORIZONTAL CONTROL POINT TABLE

POINT #	NORTHING	EASTING	ELEVATION	DESCRIPTION
9014	142204.78	463541.52	967.80	CPT 3/4" P
9015	142107.72	463586.46	967.86	CPT 3/4" P
9016	142044.52	464038.38	966.34	CPT 3/4" P
9017	141273.41	465378.86	967.10	CPT 600 NAIL
9018	141482.29	465276.19	966.17	CPT 600 NAIL
9019	141713.16	465107.21	966.18	CPT 600 NAIL
9020	142004.09	464947.15	970.44	CPT 3/4" P
9021	142298.68	464810.62	964.22	CPT 3/4" P
9022	141908.35	465054.75	976.43	CPT - 600 NAIL
9023	142115.06	465097.14	966.73	CPT - 600 NAIL
9024	142008.78	464816.45	969.77	CPT - 600 NAIL



NO.	DATE	BY	DESCRIPTION
1	08/27/18	SEH	ISSUED FOR PERMIT
2	09/11/18	SEH	REVISED PER COMMENTS
3	09/11/18	SEH	REVISED PER COMMENTS
4	09/11/18	SEH	REVISED PER COMMENTS
5	09/11/18	SEH	REVISED PER COMMENTS
6	09/11/18	SEH	REVISED PER COMMENTS
7	09/11/18	SEH	REVISED PER COMMENTS
8	09/11/18	SEH	REVISED PER COMMENTS
9	09/11/18	SEH	REVISED PER COMMENTS
10	09/11/18	SEH	REVISED PER COMMENTS

PLANS PREPARED BY:
 SEH
 3008 WISCONSIN CENTER DRIVE
 ST. PAUL, MINNESOTA 55113
 PHONE: 1.800.328.2388
 WWW.SEH.COM

PLANS PREPARED FOR:
 City of Faribault
 PROJECT: FARIBULT WATER RECLAMATION FACILITY
 SHEET: FARIT 140524
 DATE: 09/11/18
 DRAWING NO: FA140524-003

FARIBAULT WATER RECLAMATION FACILITY
 FLOOD MITIGATION AND BANK STABILIZATION PROJECT
 FARIBULT, MINNESOTA
 SITE PLAN AND EXISTING
 CONDITIONS

PROJECT FUNDING

- PRELIMINARY COST ESTIMATE OF \$3.8M
- PROPOSED FUNDING SPLIT OF 50/50 STATE & LOCAL
- AN APPLICATION WAS SUBMITTED TO THE MN DNR FLOOD DAMAGE REDUCTION PROGRAM
- A CAPITAL BONDING PROJECT APPLICATION WAS SUBMITTED TO THE MN MMB OFFICE

QUESTIONS ?

TRAVIS BLOCK, PUBLIC WORKS DIRECTOR

CITY OF FARIBAULT, MINNESOTA

TBLOCK@CI.FARIBAULT.MN.US

507.333.0365

